

# BodiTrak Pressure Mapping System from BES Healthcare Ltd

## Making Pressure Mapping an Easy, Accessible Reality



Gives you the ability to visually illustrate clinical recommendations



Pressure mat is made from a full stretch material to enable conformity to the body



Easy to plug into your PC and laptop's USB port for instant pressure imaging



No interface module required as electronics are integrated into the mat

The **BodiTrak Pressure Mapping System** (the new and improved FSA) is an innovative tool that can help prevent pressure injuries, and evaluate postural management when assessing for cushions, wheelchairs, etc. The system comes with straight-forward software that can extract data into everyday formats within healthcare settings. All of this comes at an accessible price that will help save money in the long-term.



To learn more about the BodiTrak Pressure Mapping System

visit: [www.beshealthcare.net](http://www.beshealthcare.net)

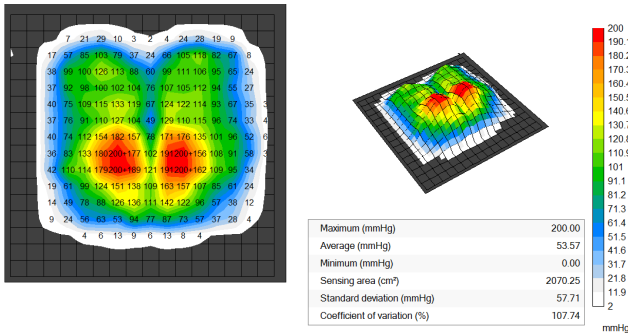
You can also contact us on +44 (0) 1179 666 761 or

email [info@beshealthcare.net](mailto:info@beshealthcare.net)

Follow us on



# What can the BodiTrak Pressure Mapping System tell you?

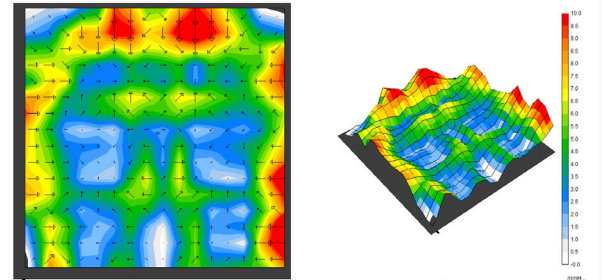


## Pressure Map

The Pressure Map allows you to see areas of high pressure (in red) and areas of low pressure (in green and blue). Higher pressures are of particular concern around the ischial tuberosities of the pelvis, where pressure ulcers can develop.

## Gradient View

With the Gradient View you have the ability to assess areas that are at high risk of shear, with the rate of change in pressures between two points. This is a way of highlighting problematic areas which makes BodiTrak a great tool to demonstrate to clients where shear-related risks are occurring.



### BodiTrak Pressure Mapping System

	Model Code	Sensing Cells (Rows x Columns in cm)
Standard Seat	BT1510	16x16
High Resolution Seat	BT1526	32x32
Standard Bed	BT3510	67x27
High Resolution Bed	BT3520	53x67
Standard Torso	BT4510	25x32

### Calibration Kits

Model Code	Product Description
ACC16	Standard S Calibration Jig (Seat)
ACC18	M Calibration Jig (Torso)
ACC19	Long Calibration Jig (Bed)
ACC1630	HP Calibration Jig
ACC13	Auto Calibrator (Bed and Seat sensors)

### Delivery, Installation, and Training options

Code	Product Description
FSATRA	PM delivery, installation & training session
FSATRA1	PM delivery, half day training session
FSATRA2	PM delivery, full day training session
FSATRA3	PM Delivery only

## Do you use a tablet or Android phone?

The BodiTrak Lite is a simpler version that connects to all tablets and Android phones! To learn more email: [info@beshealthcare.net](mailto:info@beshealthcare.net) or call +44 (0) 1179 666 761